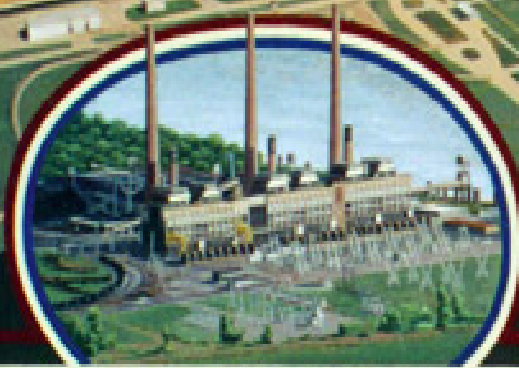


WELCOME

to the

ATOMIC CITY



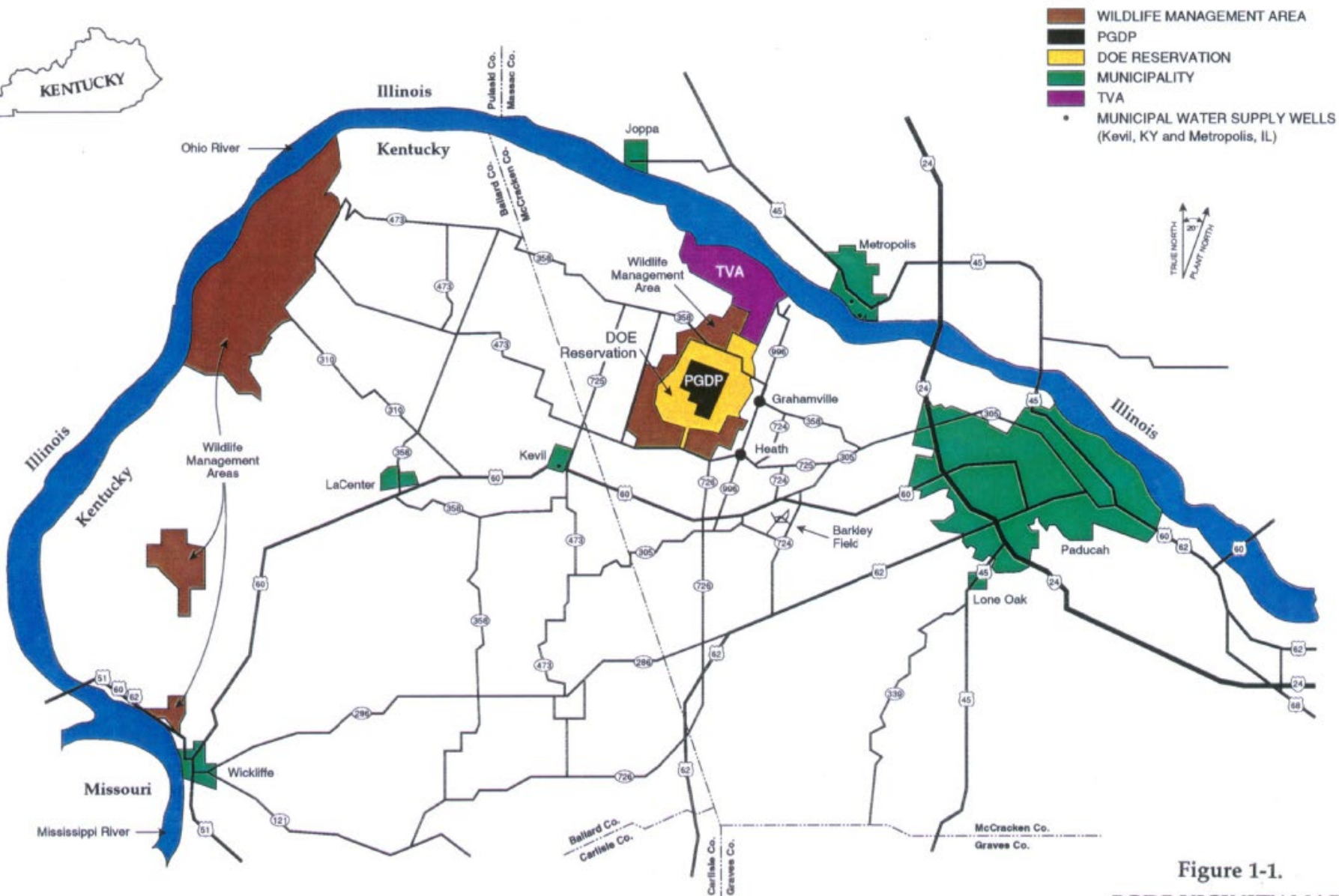
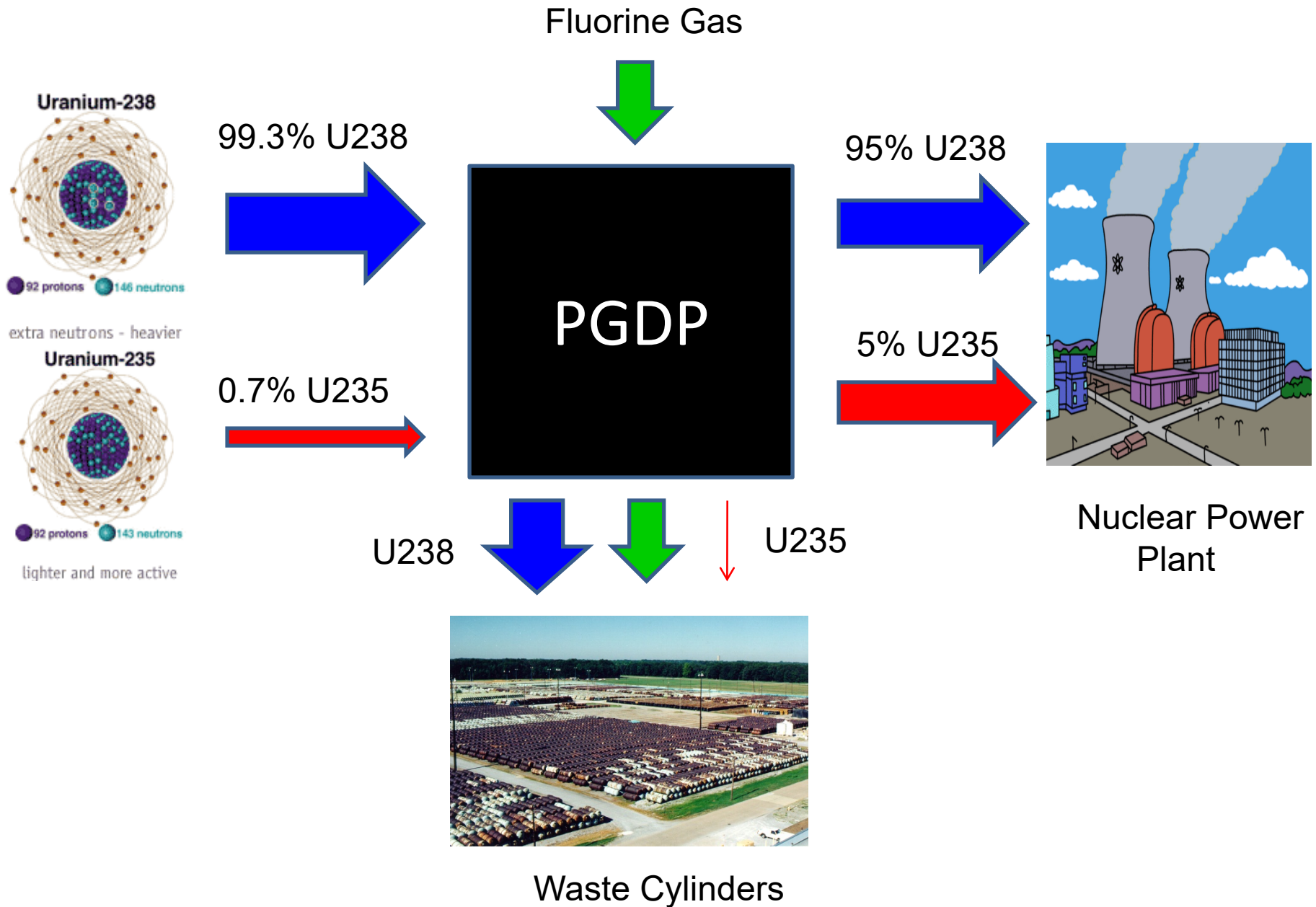


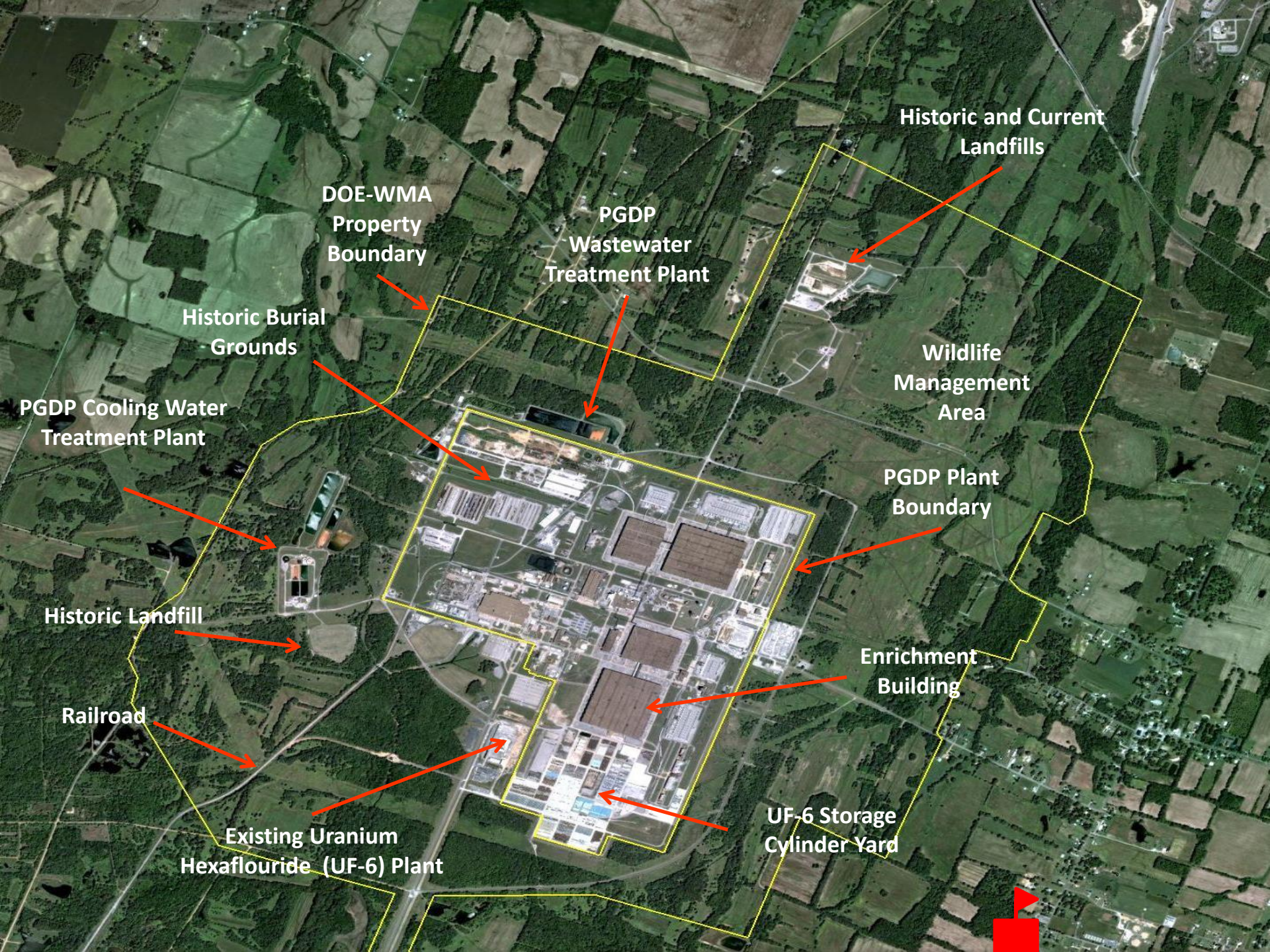
Figure 1-1.
PGDP VICINITY MAP
Paducah Gaseous Diffusion Plant
Paducah, Kentucky



The Paducah Gaseous Diffusion Plant

The Paducah Gaseous Diffusion Plant





DOE-WMA
Property
Boundary

PGDP
Wastewater
Treatment Plant

Historic and Current
Landfills

Historic Burial
Grounds

Wildlife
Management
Area

PGDP Cooling Water
Treatment Plant

PGDP Plant
Boundary

Historic Landfill

Enrichment
Building

Railroad

Existing Uranium
Hexafluoride (UF-6) Plant

UF-6 Storage
Cylinder Yard



Problem Statement

- The U.S. Department of Energy is planning on closing the Paducah Gaseous Diffusion Plant in the near future.
 - If the plant closes:
 - 2000 people will lose their jobs
 - \$200 million/year will be lost
 - The current site is highly polluted with toxic wastes and radioactive materials
 - Before the Department of Energy leaves, they will have to clean up the site

Questions

- Question 1: Pretending to be the person on your card, how do you think closing the site might affect you?
- Question 2: Again, pretending to be the person on your card, what do you think should be done to minimize the effects?